

# **Elk County Conservation District 2013 Annual Report**



# Directors & Staff

## **Board of Directors**

Russ Braun, Chairman  
Joe Labant, Vice-Chairman  
Jan Kemmer, Commissioner  
Jerry Olsen, Public Director  
Mike Hovatter, Public Director  
Denise Casilio, Farmer Director  
Ron McMinn, Farmer Director

## **Associate Directors**

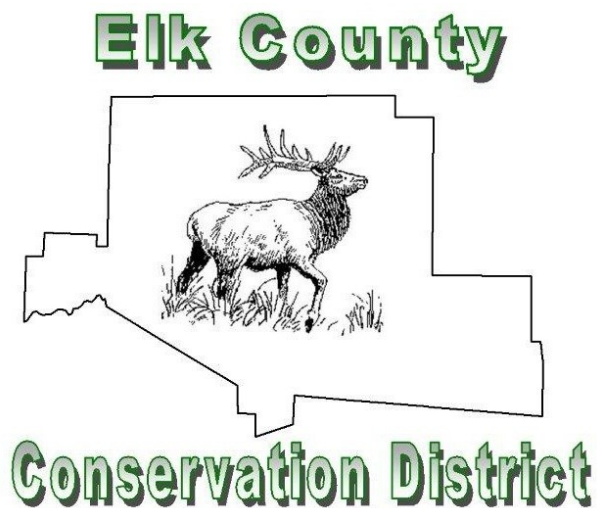
Jim McCluskey  
Ray McMinn

## **County Commissioners**

June Sorg  
Dan Freeburg  
Jan Kemmer

## **District Staff**

Steven Putt, CPESC, District Manager  
Kim Bonfardine, Watershed Specialist  
Melissa Aul, Resource Conservation Technician  
David Stubber, Solid Waste Enforcement Officer  
Diane Myers, Secretary





## **Elk County Conservation District Welcomes New Staff Member Melissa Aul, Resource Conservation Technician**



Melissa Aul joined the Elk County Conservation District on January 2, 2013 as the Resource Conservation Technician. This was a newly created position in Elk County. Melissa's responsibilities at the Conservation District include the erosion and sediment control program, agricultural program and assisting other District staff with environmental education efforts. Prior to coming to the Conservation District, Melissa had been working towards a Masters Degree in Agricultural and Biological Engineering at Penn State. She is also a 2011 graduate of Penn State with a B.S. in Earth Science and a Minor in Geophysics. Aul, a native of St. Marys, grew up an athlete playing soccer, basketball and also running track. She was also a collegiate athlete and played volleyball and basketball for Penn State. When not working for the District, Melissa enjoys building furniture, home improvement projects, as well as hunting, fishing, hiking, and kayaking.

## **Kim Bonfardine, Watershed Specialist Receives Conservation & Stewardship Award**



Congratulations to Watershed Specialist, Kim Bonfardine (pictured above, second from left), for receiving the 2013 Conservation & Stewardship Award at the PA Wilds Spring Briefing Meeting in April. This award is a testament to Kim's commitment and passion for conservation and water quality.

## **Steve Putt, District Manager Receives Certificate of Appreciation**

District Manager, Steve Putt, was presented with a PA Fish & Boat Commission certificate of appreciation at the September ECCD board meeting. Waterways Conservation Officer, Tom McMann, presented Putt with the certificate.





## Conservation District Participates in the Clarion River Cleanup



The Elk County Conservation District, Elk County Solid Waste & Recycling Department and Country Squirrel Outfitters participated in a Clarion River Cleanup on August 13, 2013. Country Squirrel Outfitters provided free canoes, kayaks, and transportation while volunteers and staff provided the manpower. Approximately 600 pounds of trash and debris was removed from a 4 mile stretch of the Clarion River.

## Conservation District Assists with Rattlesnake Survey & Tagging



On September 11, 2013 District Manager, Steve Putt and Watershed Specialist, Kim Bonfardine assisted several other State and Federal agencies in surveying and tagging rattlesnakes within the Allegheny National Forest. The data is important in learning more about the life cycles, migrations and den sites of this important ecological resource.



**Les Haas Memorial  
Trail Challenge**  
**14K Run, 7K Run & 2 Mile Fun Walk**

On September 21, 2013 the Elk County Conservation District hosted the Second Annual Les Haas Memorial Trail Challenge. The event is held annually to raise funds for the Conservation District's environmental education programs and is held in honor and memory of Les Haas. Les was a former Conservation District board director and a retired PA Fish & Boat Commission Waterways Conservation Officer. The event utilizes the Laurel Mill Trail within the Allegheny National Forest. This year's race featured two competitive running distances; a 14K run (approximately 8.6 miles) and a 7K run (approximately 4.3 miles). The event also included a 2 mile non-competitive "fun walk." Despite the rainy and wet conditions, there were approximately 55 participants in this year's event. Runners ranged in age from 11 to 66 years of age and our oldest walker participant was 89 years of age. The Trail Challenge raised over \$600 for environmental education.

**2013 7K Run Winners**

Male Winner:	Barry Andrulonis	Dubois, PA	32:00
Female Winner:	Julie Lang	Ridgway, PA	48:47

**2013 14K Run Winners**

Male Winner:	Russell Micale	St. Marys, PA	1:09:07
Female Winner:	Tia Dudukovich	Port Matilda, PA	1:15:31

The event could not have been a success without the support of volunteers and event sponsors. We thank the following businesses and organization for supporting our event: Allegheny National Forest, Rebco, Inc., Elk County Simmentals, Gerg Insurance Agencies, Country Squirrel Outfitters, Dave's Pro Shop, Marlowe Haas, Northwest Savings Bank, CNB Bank, Jan Haas, Marion Jones, Giant Eagle, Teva Footwear, Road ID, Ridgway YMCA, and the Elk County Striders Running Club.

## Chapter 105 Dam Safety & Waterway Management

In 2013 the Elk County Conservation District continued its delegation agreement with the Pennsylvania Department of Environmental Protection (DEP) to administer the Chapter 105 program. The Title 25, Chapter 105, Dam Safety and Waterway Management regulations pertain to dams, reservoirs, culverts, bridges, stream enclosures, channel changes, dredging, fills, stream crossings, and other stream and wetland related activities. The responsibilities of the Conservation District under this delegation agreement includes; investigation of complaints, routine inspections, technical assistance, education and outreach and acknowledgement of General Permit (GP) activities. These activities and number of permits issued in 2013 are listed below. In addition, District staff were involved in 152 technical assistances related to the Chapter 105 program.

<u># Permits Issues</u>	<u>Permit Type</u>
3	GP1 Fish Habitat Enhancement Structures
1	GP2 Small Docks and Boat Launching Ramps
4	GP3 Bank Rehabilitation, Protection and Gravel Bar Removal
2	GP4 Intake and Outfall Structures
6	GP5 Utility Line Stream Crossings
0	GP6 Agricultural Crossing and Ramps
11	GP7 Minor Road Crossings
0	GP8 Temporary Road Crossings
0	GP9 Agricultural Activities

## Rain Barrel & Private Well Owners Workshop

On May 11, 2013 the Elk County Conservation District and the Elk County Planning Department partnered to provide a rain barrel and well owners workshop for area residents. The workshop was attended by 37 residents. Conservation District staff provided information related to on-lot storm-water controls, non-point source pollution reduction and water conservation. The second half of the workshop focused on best management practices for private well owners and ways to protect your private drinking water source. Attendees were also provided with a free 35 gallon rain barrel and instructions on how to properly use their new rain barrel. Funding for the workshop was provided by a PACD mini-grant and a DEP Environmental Education grant.





# Invasive Species & Forest Pest Management

## Gypsy Moth Suppression Program

Early signs in 2013 indicated that the gypsy moth populations had increased and there would, once again, be a need for a suppression program in Elk County. Significant populations of caterpillars and evidence of defoliation was evident by late spring and early summer. However, the populations declined by late summer and early fall. This was likely due to weather conditions and natural controls. The Elk County Conservation District was once again the coordinating agency in Elk County for the DCNR Bureau of Forestry's Gypsy Moth Suppression Program. A public meeting was held in August to inform the public about the suppression program. Despite the early signs of a significant population, we only received one inquiry into the program. Upon investigation, only one egg mass was found on the property. Overall, trees seemed to have recovered from the early defoliation and populations declined later in the year. There was no need for a spray program in 2013. The gypsy moth populations will continue to be monitored.



Female Gypsy Moth with Egg Mass

## Hemlock Woolly Adelgid Monitoring



Hemlock Woolly Adelgid (HWA) is a fluid-feeding insect that feeds on the branches of hemlock trees (and in some cases, spruce trees). It can be found throughout eastern north America, including Pennsylvania. It is a serious threat to the Pennsylvania state tree, the Eastern Hemlock. It was recently found in the eastern forests between Elk and Cameron Counties as well as neighboring areas to the West in the Allegheny National Forest. The Elk County Conservation District has joined a growing effort to monitor problem areas and identify priority work areas. In 2013 Elk County Conservation District staff attended various agency meetings and webinars and participated in the Allegheny Plateau workgroup sessions. These sessions were hosted by the US Forest Service and The Nature Conservancy.

The group includes dozens of participants including several universities, the Pennsylvania DCNR, PA Game Commission, New York Office of Parks, Recreation and Historic Preservation; Elk, Forest and McKean counties; U.S. Army Corps of Engineers; Seneca Nation of Indians; Pennsylvania Sustainable Forest Initiative; Friends of Allegheny Wilderness, National Wild Turkey Federation, and many more.

## Sinnemahoning Invasive Plant Management Area (SIPMA)

The SIPMA was originally formed in 2009 around the work to control mile a minute vine in the First Fork of the Sinnemahoning Creek. Since then, the group has targeted other invasive plants throughout the Sinnemahoning watershed. The Elk County Conservation District continues to participate in the quarterly meetings and partner with SIPMA in educational efforts in the area. The Elk County Conservation District also became part of the SIPMA steering committee in 2013.





# **Dirt and Gravel Roads Program**

Pennsylvania's Dirt and Gravel Road Maintenance Program was created in 1997 as a response to requests from members of Pennsylvania Trout Unlimited (TU). Members of TU identified a growing concern for erosion to our roadways and the resulting sedimentation to our streams throughout the state. The Dirt & Gravel Road Program was enacted into law in 1997 as a section of the PA Vehicle Code. The program provides funding for environmentally sensitive maintenance of dirt and gravel roads. The goal of the program is to create a more environmentally and economically sustainable low-volume road network through education, outreach, and project funding.

In 2013 the Elk County Conservation District was allocated approximately \$25,000 to utilize for on-the-ground dirt & gravel road improvement projects. Approximately \$3,000 was allocated for the Conservation District to utilize for administration and education related to the program. Projects eligible for funding under this program include, but are not limited to the following: road drainage improvements, culvert and cross pipe replacements, headwalls and endwalls, vegetation management, road surface improvements, dust suppression, and road base improvements. For an entity to be eligible to receive funding from the Elk County Conservation District's Dirt & Gravel Road Program, the entity must have attended the 2-day Environmentally Sensitive Maintenance of Dirt & Gravel Roads training within the last 5 years. There are currently 4 entities in Elk County that are eligible for funding; Benezette Township, Jones Township, Fox Township, and the PA Game Commission.

## **2013 Dirt & Gravel Road Projects**

In 2013 the Elk County Conservation District agreed to fund one project under the Dirt & Gravel Road Program. The project included adding base fill materials, re-establishing a road crown, and stabilizing the surface with driving surface aggregate (DSA) materials. This work area included approximately 990 feet along Mefferts Run Road (T-360) in Jones Township. The project is located in a Cold Water Fishery and the affected stream has a wild trout population. \$25,000 was allocated for this project. The fill materials that will be utilized to create the new base was placed in the fall of 2013, however, due to scheduling conflicts with the contract's paving machine, the DSA materials could not be placed before winter struck with snow covered the roadway. The project will be completed in Spring 2014.

## **Quality Assurance Board (QAB)**

The Elk County Conservation District's Dirt & Gravel Road Program is administered by a 4 member (3 voting and 1 non-voting) Quality Assurance Board (QAB). The QAB sets local program policies, reviews all program applications, and makes recommendations to the Conservation District Board for project spending. The QAB is made up of the following individuals:

Steven Putt, Elk County Conservation District

Russ Braun, Elk County Conservation District

Tom McMann, Pennsylvania Fish & Boat Commission

Gary Swope, USDA Natural Resources Conservation Service

## Agricultural Outreach in Elk County

With the expansion of staff members at the district, in 2013, efforts to reach out to more of the agricultural community were being made. In October of 2011, changes were made to the Manure Management Manual that requires any operation that spreads or produces manure to have a plan. Educational Outreach efforts were made to farmers to educate them about these plans as well as Agricultural Erosion and Sediment Control. One Manure Management Manual workshop was held in June, 2013 with very little attendance. However, the outlook for workshops for the next year looks increasingly better as a result of spreading the word in 2013.

In addition to educational outreach, The Elk County Conservation District received 3 complaints related to Agriculture in 2013. All complaints were addressed with the help of Gary Swope at NRCS or Jamie Ulrich from SCC. As a result of these complaints, one farmer is currently waiting to be approved through EQIP for financial assistance in making environmentally friendly upgrades to his farm. These upgrades will include a grazing plan as well as assisting with streambank fencing to keep livestock out of the stream. EQIP and REAP are programs that the district introduces to local farmers because they help farmers become more environmentally conscious and more resource conscious while assisting financially as well.

As well as assisting with Manure Management Manuals, The Elk County Conservation District can also help with creating an Agricultural Erosion and Sediment Control Plan. These plans take a look at Animal Heavy Use Areas as well as crop fields to determine steps that can be taken to reduce runoff from agriculture. This runoff could contain valuable soils for crops, fertilizers, and manure. Farmers spend a lot of time and money on having good soils and fertilizers and it's our job to help them learn about ways to keep as much of that hard work in tact as possible.

## District Website Makeover

A lot of changes were made to the Elk County Conservation District's website this year as well. It has become a more user-friendly site, with a lot of valuable information to the public. This includes a page dedicated to Agriculture with helpful fact sheets for Manure Plans and Ag E&S. Also, there is a lot of information about E&S requirements for construction, as well as some of the programs the district is involved in.



# **Erosion and Sedimentation Pollution Control Program**

## **(E&S Program)**

The Elk County Conservation District has Level II delegation from the PA Department of Environmental Protection (DEP) to administer the erosion and sediment pollution control program. Level II duties include; education, technical assistance, site inspection, plan review, and voluntary compliance. The Conservation District works with the DEP on all enforcement matters. The goal of this program is to minimize soil erosion and sedimentation. Erosion is part of our naturally occurring processes, but this process can be greatly increased by human disturbances.

PA Code, Title 25, Chapter 102 and the Pennsylvania Clean Streams Law requires measures and facilities to be in place during earth disturbance activities to minimize the potential for erosion and sediment pollution problems. These regulations also require individuals involved in earth disturbance activities to develop an erosion and sediment control plan (E&S Plan). An E&S plan is required for all disturbance of 5,000 square feet in size or larger. This plan includes measures that will be implemented to minimize erosion, describes how construction activities will progress at the site, identifies the scope of the project, and identifies how the disturbed areas will be stabilized upon completion of the project.

Working under the direction of the Chapter 102 rules and regulations and through the delegation agreement with the PA Department of Environmental Protection, the Elk County Conservation District is tasked with the responsibility of reviewing erosion and sediment control plans. In 2013 the Elk County Conservation District reviewed and processed 37 erosion and sediment control plans. 19 of these plans required follow-up reviews. Projects encompassed approximately 395 project acres and included approximately 75 acres of disturbance.

In addition to the processing of erosion and sediment control plans, the Conservation District also investigates complaints, conducts site inspections, provides technical assistance and organizes educational events. In 2013 the Elk County Conservation District received and investigated 19 complaints and conducted 60 site inspections. The Conservation District also conducted 3 educational events, which were attended by approximately 100 attendees. Conservation District staff were also involved in 221 technical assistances related to the erosion and sediment control program.





## National Pollutant Discharge Elimination Systems (NPDES) and Erosion & Sediment Control General Permit (ESCGP) Program

The Elk County Conservation District also serves as the initial contact, reviewer, inspector and public educator for the National Pollutant Discharge Elimination System (NPDES) permit for stormwater discharges from construction activities and the Erosion & Sediment Control General Permit 1 (ESCGP-1) permitting process. These regulations have been developed by Pennsylvania in order to meet Federal Clean Water Act requirements.

NPDES permits are required for earth disturbance activities that will involve one (1) or more acres of disturbance over the life of the project (excludes agriculture, timber harvesting, road maintenance and oil & gas activities). There are two types of NPDES permits. Individual NPDES Permits are required for projects that will occur in special protection watersheds (high quality or exceptional value) or may be required due to other special circumstances. General NPDES permits are for projects involving earth disturbance activities of one acre or more in areas that are not considered special protection and do not fall under one of the other special circumstances.

ESCGP permits are required for oil and gas development activities when the total amount of earth disturbance activity results in 5 acres or greater of substantially connected earth disturbance, or 5 or more acres of earth will be disturbed over the life of the project. Earth disturbance permitting for oil and gas activities is handled by two agencies; the County Conservation District and PA Department of Environmental Protection (DEP). Generally speaking, DEP handles the permitting responsibility from the well to the compressor station. The Conservation District has the permitting responsibility from the compressor station to the consumer.

The following are the types and number of NPDES and ESCGP-1 permits that were processed by the Elk County Conservation District in 2013:



Individual NPDES Permits = 0

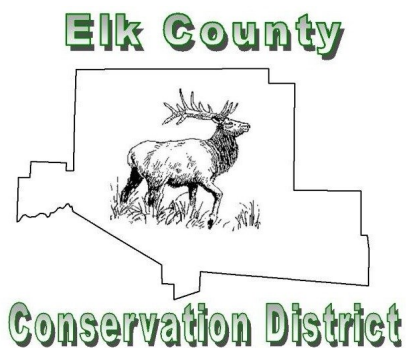
General NPDES Permits = 7

ESCGP-1 Permits = 0

## ECCD Hosts Erosion & Sediment Control Workshops



One of the goals of the Elk County Conservation District is to increase the awareness of erosion and sediment control requirements and regulations. In an effort to better educate the regulated community and to better inform contractors, developers, municipal officials and other professionals involved in earthmoving activities, the Conservation District hosted a series of three workshops in 2013. These workshops covered topics including, erosion and sediment control regulations, erosion and sediment control plans, NPDES permitting, stream and wetland permitting, GP permit applications and best management practices. The Pennsylvania Association of Conservation Districts (PACD) provided financial support for the workshops through a mini-grant. Overall, nearly 100 participants attended the three workshops. More educational workshops will be planned for 2014.



# Community Involvement, Education & Outreach

## **Elk County Gas Task Force**

The Elk County Conservation District is a regular participant in the Elk County Gas Task Force committee meetings as well as chair the Water Quality & Environment subcommittee. The committee meets every two months to discuss important issues related to unconventional gas well drilling within the county. Members of the committee include; County Commissioners, County Planning Office, Penn State Cooperative Extension, local municipal officials, gas industry representatives, conservation organizations, area housing and educational institutions, and many others.

## **Allegheny WINs Coalition**

The Conservation District continues to support and be an active member in the Allegheny Watershed Improvement Needs (WINs) coalition. WINs is a group of nonprofits, private individuals, local watershed organizations and local, state and federal government agencies that share the goal of improving and protecting the Allegheny River and its primary tributaries, including the Clarion River watershed. Goals include sustaining and enhancing habitat for sport fish, protecting threatened and endangered species, and improving water quality.

## **Bennett Branch Working Group**

The Bennett Branch Working Group formed in 2012 when a group of local officials, state agencies, conservation organizations, and private citizens met to discuss the possibilities of enhancing public access and recreational opportunities along the Bennett Branch of Sinnemahoning Creek. The watershed has a deep history of coal mining in the area, which dates back as early as the 1800's. Beginning in 2003, efforts to remediate the contamination caused by this historic coal mining began to take place. To date over \$40 million has been spent to revive the watershed and it is now a viable habitat for aquatic life. The Elk County Conservation District has continued to play an active role in the group's efforts to improve public access and recreational opportunities along this revived stream corridor.

## **Western PA Coalition for Abandoned Mine Reclamation (WPCAMR)**

Elk County is one of 24 Conservation Districts involved in the Western Pennsylvania Coalition for Abandoned Mine Reclamation. In addition to the County Conservation Districts, the coalition also includes many local and state government agencies, conservation organizations, and representatives of the mining and gas industries. WPCAMR was formed as a non-profit organization in 1982 and is actively involved in assisting organizations and communities in mine reclamation efforts. Additionally, WPCAMR works closely with various learning institutions to provide mine reclamation education.

## **Leadership Elk County**

On October 9, 2013 the Elk County Conservation District participated in the Leadership Elk County's visit to the Clarion River. District Manager, Steve Putt, discussed river recreational opportunities, water quality topics, stream designations and the importance of the Clarion River for the local economy and for wildlife.

## **Ridgway High School Career Day**

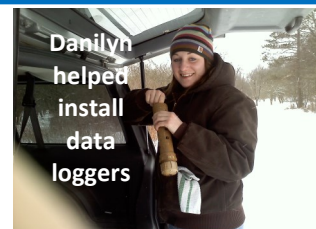
On November 1, 2013 the Elk County Conservation District was among several government agencies, organizations and business to participate in the Ridgway High School Career Day. The annual career day was attended by high school students from Ridgway, St. Marys, Johnsonburg and Elk County Catholic school districts. The Conservation District had the opportunity to discuss environmental careers with many students from across the county.





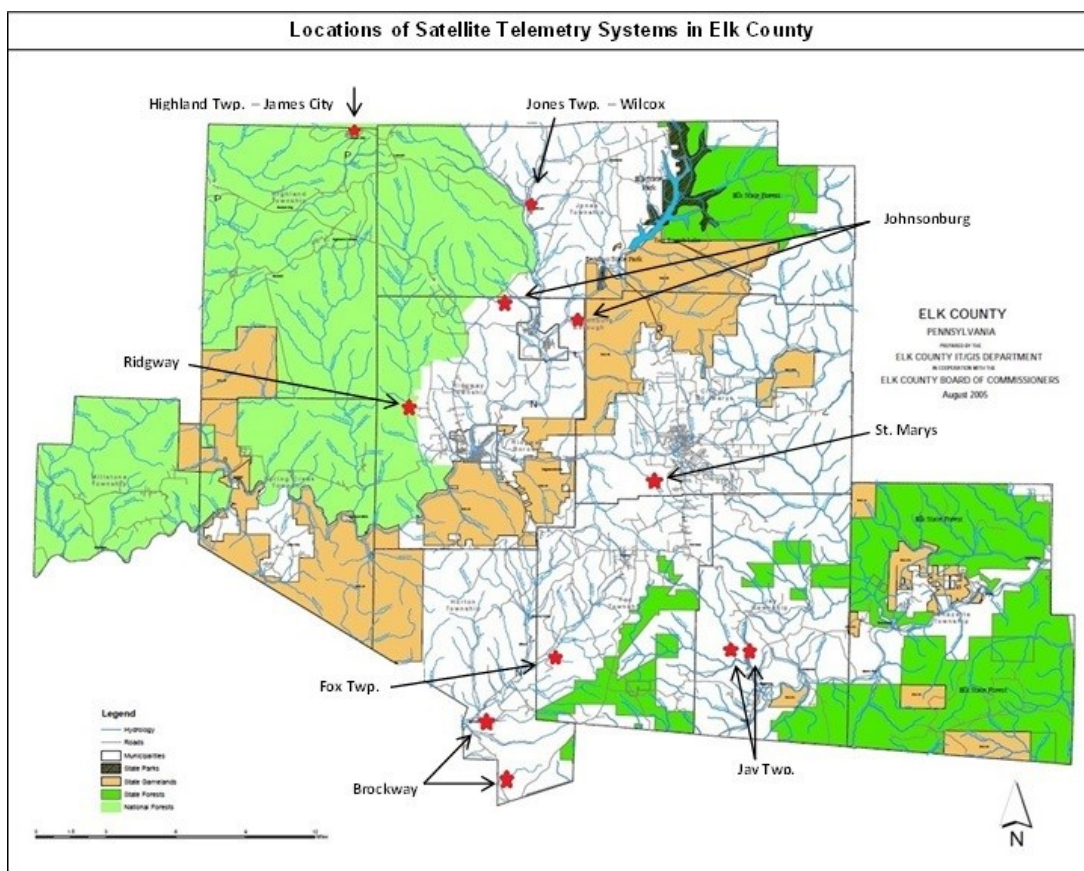
Volunteer Danilyn Schaut

## Elk County Water Monitoring Program



Danilyn  
helped  
install  
data  
loggers

In 2011, the ECCD received several grants to purchase equipment to set up a water monitoring program on public water supplies in the county and to collect base-line water quality data with data-loggers throughout the county, and since then have been supplementing the project with additional grants. In 2013 the installation of all Satellite Telemetry Systems (STS) was complete with data streaming on-line. The ECCD would like to extend a big THANK YOU to all the volunteers that helped make this possible!



**Highland Township—inside and out**



Volunteer  
Jim Moyer  
helped install  
all of the STS!



Jim hauling equipment out of the  
site at Laurel Run.



# 10th Annual Elk County Envirothon



**Envirothon** – The 10th Annual Elk County Envirothon was held in May at the St. Mary's Sportsmen's Club. Teams competed from three local high school and were tested in the areas of Forestry, Aquatics, Wildlife, Soil & Land-use, and a current environmental issue. Elk County Catholic High School won the competition and went on to compete at the Pennsylvania State Envirothon. The photo above is all of the students and helpers and below is the first place winning team and pictures of the Envirothon Study Days.



First Place Team

This young man found himself on a display at the Allegheny National Forest Ranger Station in Marionville. He said he remembered the day the picture was taken, but was very surprised to see himself on the large display.



Learning about soil!



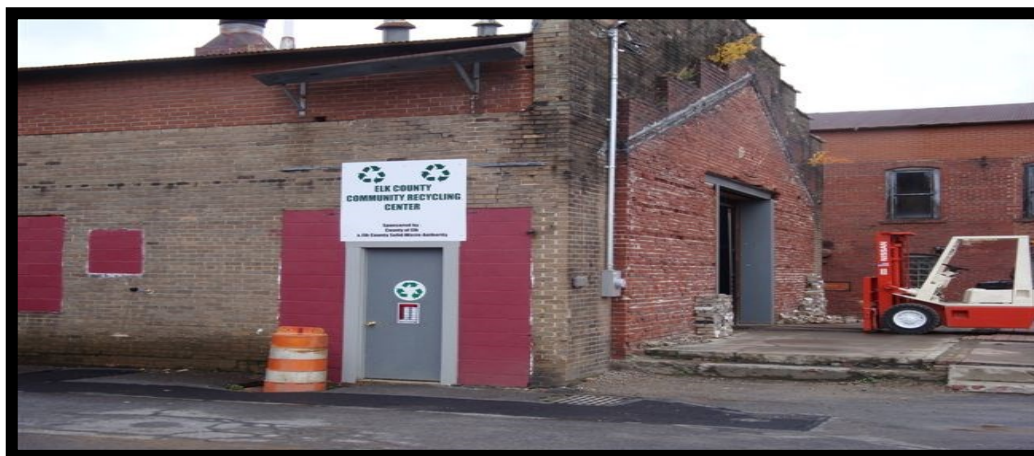
Learning how to measure trees.



# ELK COUNTY COMMUNITY RECYCLING CENTER

Stackpole Complex, 45 Heritage Drive, St. Marys, PA 15857 (814) 834-4886

<http://www.co.elk.pa.us/recycling/>



The Elk County Community Recycling Center was opened in October 2010 by the County of Elk and the Elk County Solid Waste Authority / Recycling Office. The center's main building is used for sorting and baling of materials. A warehouse next to the center was rented in 2011 for the storage of material until enough is accumulated for shipment. In 2012, additional space was acquired in the rear of the center and provided space for an office, break room, and bulb & battery storage.

The Recycling Center currently accepts newsprint, office paper, magazines, mixed paper, cardboard, hard & soft cover books, #1 plastic bottles, #2 plastic bottles, #5 plastic, #5 flex bags (bulk packs), bi-metal cans, and aluminum cans. In addition, the Recycling Office has an on-going electronics collection which occurs on the 3rd Saturday of each month and ships out a truckload of electronics about every month. They also collect fluorescent bulbs, batteries, and oil based paint and pesticides.

The Recycling Center continues to grow each year. This year they were able to purchase a new vertical baler, forklift, storage containers, and recycling bins through a PA DEP grant. Local business cooperation continues to increase as well as the loyal support of our volunteers.

The Elk Conservation District provides staffing for the Recycling Center. David Stubber, Solid Waste Enforcement Officer, has his office located in this building and oversees daily activities.



## 2013 Community Recycling Center Totals

Material	Lbs.	Tons	Material	Lbs.	Tons
#1 PETE—Plastic	34,484	17.24	Magazines	54,565	27.28
#2 HDPE—Plastic	28,851	14.43	Mixed Paper	66,636	33.32
#4—Plastic	0	0.00	OCC (Cardboard)	169,990	85.00
#5 PP—Plastic	1,724	00.86	Hard Cover Books	28,030	14.02
#5 PP—Flex Bags	64,891	32.45	Soft Cover Books	12,683	06.34
#6 PS—Plastic	539	00.27	Aluminum Cans	2,313	01.16
Office Paper	42,372	21.19	Bi-Metal (Tin)	<u>10,930</u>	<u>05.47</u>
Newsprint	76,352	38.18	<b>TOTALS:</b>	<b>594,360</b>	<b>297.18</b>

**2011 Tonnage: 106.58**

**2012 Tonnage: 202.44 Tons**

**2013 Tonnage: 297.18 Tons**

## 2013 Recycling Totals—Other Programs

Material	Pounds	Tons
Electronics	240,681	120.34
Lamps	9,848	EACH
Batteries	1,378	00.69
Oil Paint & Pesticides	3,800	01.90
Waste Tires	107,800	53.90
White Goods	39,586	19.79
Medicines	1,090	00.55
Household Haz. Waste	1,410	00.71



# Elk County Municipal Waste Enforcement Officer

The municipal waste enforcement officer position was established under a three way agreement between the Elk County Conservation District, Elk County Commissioners and Elk County Solid Waste Authority. This position was established to provide oversight and enforcement in activities related to illegal trash dumping, demolition permit issuance, and activities related to the community recycling center. The following is summary of those activities for 2013.

## David R. Stubber

As the Municipal Waste Enforcement Officer for Elk County I worked 1935.5 hours and logged 4003 miles. There were 12 investigations resulting in 4 criminal complaints filed in front of the two District Justices. All the defendants were either found guilty or pled guilty. I inspected and approved 43 Demo permits and closed 44 in Elk County.

Other duties done over the course of the year included the monthly Electronics/Plastic collection, two Unwanted Medicines Collections, and a Household Hazardous Waste Collection. Spring Tire Collections were conducted in Ridgway Township, St. Mary's, and Jones Township. There were also two trash collections on North Paul Road with the students of the St.Marys Catholic Middle School.

In October 2010 we opened the Elk County Community Recycling Center located at 45 Heritage St. in the Stackpole Complex in St Mary's. The center is open every Monday, Wednesday, and Friday as well as the 3<sup>rd</sup> Saturday of the month. We collect newspaper, cardboard, and paperboard, magazines, junk mail and office paper as well as #1 and #2 plastic bottles, #5 plastic, aluminum cans and bimetal cans.



# 2013 Financial Statement

<u>Income</u>	
CDFAP--Admin. Assist. Grant	7,688.64
CDFAP--Act 13 Suppl. Admin Assist.	19,576.33
CDFAP--Income Dist. Manager./1st Technician	26,526.75
Act 13 - UGWF Income	37,878.78
Watershed Specialist Grant Income	29,395.70
Solid Waste Enforcement Officer Income	40,547.21
County Allocation Income	24,500.00
E & S Review Fee Income	4,795.00
GP Permit Fees (Chapter105)	3,525.00
NPDES Permit Fees	3,500.00
Interest Income	156.43
Miscellaneous Income	1,122.60
Misc. Income -- Mini-Grants	6,210.88
Misc. Income -- Envirothon Donation	2,158.66
Water Monitoring Project	
Headwaters Charitable Trust	1,600.00
Sinnemahoning Stakeholders Grant	310.00
3RQ(Three Rivers Quest) W.Va.University	7,000.00
Foundation PA Watersheds	20,000.00
DEP - Surface Water Assess Grant	9,000.00
<b>TOTAL INCOME</b>	<b>245,491.98</b>
<u>Expense</u>	
Payroll Expenses	116,214.12
Health Insurance	13,304.88
Retirement	7,851.72
FICA (Social Security) Company	7,211.35
Med. (Social Security) Company	1,686.54
PAUC – Unemployment Comp. Company	2,943.95
Workers Compensation	1,114.50
Travel Expense	7,052.58
Per Diem Expense	814.74
Registration Fees	123.00
Meeting Expense	264.15
Office Supplies	1,302.99
Software Charges	43.50
Advertising	210.10
Furniture & Equipment	1,336.05
Telephone	894.04
Postage Expense	4.24
Dues & Memberships	1,653.00
Sponsorship Fees	200.00
Act 13 - CDFAP/SAA Expenses	
Board Director Travel	722.64
Annual Report	77.99
Liability Insurance	150.00
Administrative Services	12,256.54
Annual Audit	2,300.00
Envirothon Expenses	1,970.07
Misc. Mini-Grant Expenses	6,210.10
West Creek Wetland	1,182.22
Water Monitoring Project Expenses	
Water Monitoring Project - Colcom Grant	
Personnel / Salaries	4,590.69
Equipment	616.40
Contractual	13,518.00
Travel	619.82
Supplies	891.23
Water Mon. Project - Colcom/IFCTU	
Equipment	1,668.00
Contractual	3,910.62
Travel	653.50
Supplies	368.81
Water Monitoring Proj. - Match/Data Base	4,000.00
Headwaters Char. Trust. (Calibration)	540.00
Sinnemahoning Stakeholders Grant	670.00
3RQ(Three Rivers QUEST) W. Va. University	
3RQ -- Equipment (Supplies)	5,975.00
3RQ -- Travel	156.51
<i>(Total Water Monitoring Project Expenses)</i>	<i>38,178.58)</i>
Dirt & Gravel Road Expenses	12,500.00
Dirt & Gravel Road Admin. & Edu. Fees	1,154.80
<b>TOTAL EXPENSES</b>	<b>240,928.39</b>
<b>NET INCOME</b>	<b>4,563.59</b>

## ***Cooperating Agencies & Organizations***

The Elk County Conservation District works closely with many local, state and federal government agencies as well as many non-profit organizations. We greatly value these partnerships and collaborative conservation efforts they provide. The following is a partial list of some of our partnering agencies and organizations:

**Allegheny National Forest**  
Marienville Ranger District  
131 Smokey Lane  
Marienville, PA 16239

**Army Corps of Engineers**  
East Branch Lake  
631 East Branch Dam Road  
Wilcox, PA 15870

**DCNR Bureau of Forestry**  
258 Sizerville Road  
Emporium, PA 15834

**DCNR Bendigo State Park**  
533 State Park Road  
Johnsonburg, PA 15845

**PA Dept. of Environmental Protection**  
North West Regional Office  
230 Chestnut Street  
Meadville, PA 16335

**PA Dept. of Environmental Protection**  
Knox District Office  
310 Best Avenue  
Knox, PA 16232

**PA Fish & Boat Commission**  
North Central Region Law Enforcement  
1150 Spring Creek Road  
Bellefonte, PA 16823

**PA Fish & Boat Commission**  
North Central Region Outreach & Education  
450 Robinson Lane  
Pleasant Gap, PA 16823

**PA Game Commission**  
North Central Region  
P.O. Box 5038  
Jersey Shore, PA 17740

**USDA Natural Resources Conservation Service**  
478 Jeffers Street, Building 3, Suite D  
DuBois, PA 15801

**PA Association of Conservation Districts**  
25 North Front Street  
Harrisburg, PA 17101

**Headwaters Resource Conservation & Development**  
109 North Brady Street, 2nd Floor  
DuBois, PA 15801

**Western Pennsylvania Conservancy**  
Allegheny Regional Office  
159 Main Street  
Ridgway, PA 15853

**PA Department of Agriculture**  
Western PA Region  
6 McIntyre Road  
Gibsonia, PA 15044

**PA Department of Transportation**  
Elk County Maintenance Department  
32 St. Leo Avenue  
Ridgway, PA 15853

**US Fish & Wildlife Service**  
PA Field Office  
315 South Allen Street, Suite 322  
State College, PA 16801

**North Central PA Regional Planning & Development**  
651 Montmorenci Road  
Ridgway, PA 15853

**Western PA Coalition for Abandoned Mine Reclamation**  
266 Donohoe Road, Suite 110  
Greensburg, PA 15601