

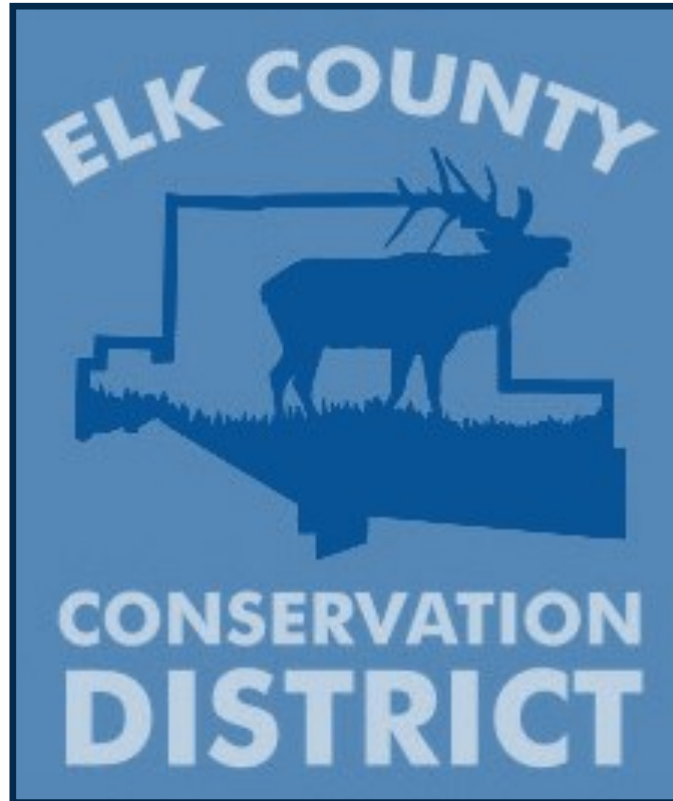
ELK COUNTY
CONSERVATION DISTRICT
2020 Annual Report





On the cover: A large bull elk approaches the herd during the rut at the Elk County Visitor Center, in Benezette, Elk County. "The rut," as it is commonly referred to, is the time of year when elk mate. This is when sparring can be seen and bulls bugling can be heard.

Photo By: Kate Wehler, District Manager



Elk County Conservation District

Elk County Community Recycling Center

850 Washington Street

Saint Marys, PA 15857

(814) 776-5373



[Follow us on Facebook at:](#)

Elk County (PA) Conservation District



Directors & Staff

New staff addition in 2020

In February of 2020 the Conservation District welcomed Elk County local, Victoria Challengsworth to the team. Victoria earned her Bachelors of Science in Environmental Science from Thiel College. She has spent time utilizing her degree while working as a Backcountry Steward for the New York State Department of Environmental Conservation, as a Company Locator for Allegheny Contracting of Ridgway, PA, and most recently as Conservation Education Specialist for the Keystone Elk Country Alliance in Benezette, Pa. Victoria loves spending her free time backpacking with her dogs, Ollie and Oakley, hunting, trapping and gardening.



District Staff

Kate Wehler, CPESC- District Manager

Ryan Grimm- Resource Conservation Technician

Taylor Gillette- Resource Conservation Technician

Evan DeLong- Watershed Technician

Victoria Challengsworth- Resource Conservation Technician

David Stubber -Solid Waste Enforcement Officer

Diane Myers- Secretary

Associate Directors

Jim McCluskey

J. Jerome Olson

2020 Board of Directors

Russ Braun- Chairman

Mike Hovatter- Vice-Chairman

Joe Labant- Secretary/Treasurer

Joe Daghir- Commissioner

Chris Smith- Public Director

Andy Sorg- Farmer Director

Ray McMinn- Farmer Director

County Commissioners

Joe Daghir

M. Fritz Lecker

Matthew G. Quesenberry, Sr.

Saying Farewell to a Conservation Cornerstone



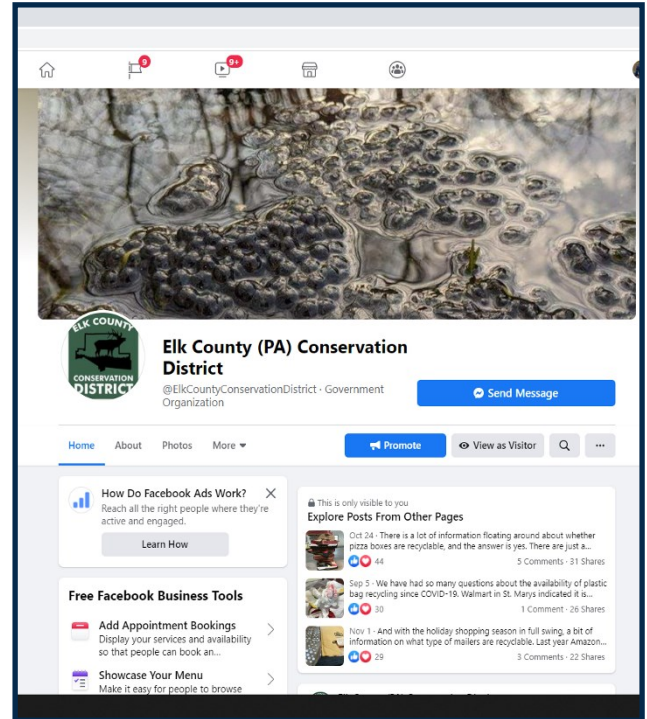
The Elk County Conservation District said farewell to long-time supporter, activist, board member and friend, Ronald McMinn, who passed away in 2020. Ronnie was a long time Elk County resident and was actively involved in numerous volunteer groups throughout the region. He served on the Elk County Conservation District's Board of Directors for over 40 years.

His love of farming and his dedication to the Conservation District are carried on by his son, Ray, who serves as one of the District's farmer directors and by his granddaughter, Amanda, and her family, who continue to run the family farm.



Coping with Covid-19

2020 has presented a challenge for many organizations. The advent of Covid-19 has resulted in the need to “think on our feet”. Over the course of the year, the Elk County Conservation District has been able to maintain consistency and effectiveness in all of our delegated programs. We have also been able to forge forward and continue with some of our favorite community events and activities by making adjustments to keep the community and staff safe.



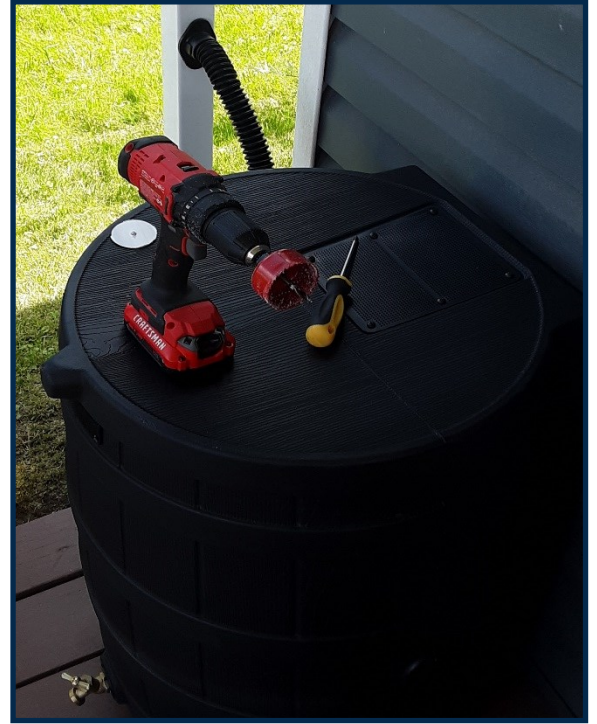
Virtual is a word in everyone’s vocabulary since the pandemic began. How can we continue to reach people while keeping everyone's safety in mind? The answer is virtual programs, education and outreach.

Through the use of programs such as Facebook, Cisco WebEx, and Zoom, the Conservation District has continued to reach out. The District celebrated international Bat week Virtually on our Facebook with a series of 6 posts which provided fun activities and insightful information. These posts reached 4,881 people who would otherwise have been unreachable due to geographic restraints and Covid-19 restrictions.

We also held our annual rain barrel workshop, provided several education programs for schools, and completed a unique project called “The 12 Crafts of Christmas”. All were done in virtual or contactless format. Read on to learn more!

Another Successful Rain Barrel Workshop

The Elk County Conservation District hosts informational workshops annually for our Elk County community and this year was no exception. The Conservation District held our Rain Barrel Workshop on June 30th. This year the workshop was held as a webinar due to Covid-19 concerns, but that didn't stop 41 residents of our community from participating in this year's event. The event filled quickly and we were able to provide participants with a valuable lesson about the impacts of storm water and reducing excess runoff. Participants were required to register for the webinar portion of the workshop in order to receive the pick-up dates for their rain barrel at the end of the presentation. Participants took home a free rain barrel and an easy adaptable diverter kit to begin making positive changes at their homes and in our local community. This project was able to be paid for thanks to a generous donation from Seneca Resources.



Storm water Fast Facts:

- 1.) Flooding is the #1 natural disaster in the world
- 2.) The average roof produces 480 gallons of water during a 1 inch storm event.
- 3.) 40% of all household water use in the summer is used for watering lawns and gardens.
- 4.) Flooding and storm water damages not only property but transports pollutants and negatively affects aquatic ecosystem health.



Manufacturing Day

This winter, the Elk County Conservation District (ECCD) teamed up with the Community Education Center of Elk and Cameron Counties (CEC) and Domtar Paper Company to virtually educate three Johnsonburg elementary school classes on Domtar's paper making process and the wastewater treatment process that they use. Each of the 5th grade classrooms were supplied with kits to conduct their own mini-wastewater treatment activity.



Students learned about each intermediate step in the wastewater treatment process and how water is ultimately discharged back into the Clarion River.



Bringing Hydroponics Home

The Elk County Conservation District recently received a grant from the Elk County Community Foundation, this grant was to purchase Hydroponic garden systems and to do educational programming for the community. Hydroponics is an agriculture technique that uses water to grow plants, there is no soil. Phase 1 of the grant is educational programming for all 7th grade classes in Elk County. Thus far, Elk County Catholic and St. Leo's have participated in this unique opportunity and are learning about how hydroponics works in their classrooms. Virtual lessons were provided for the classes on what hydroponics is and how to set up their own gardens.



Phase 2 will involve a community education workshop where participants will learn about how hydroponics works, how to set it up and will ultimately take home a small hydroponic system (pictured right) to use in their own homes!

Elk County Upstream Art

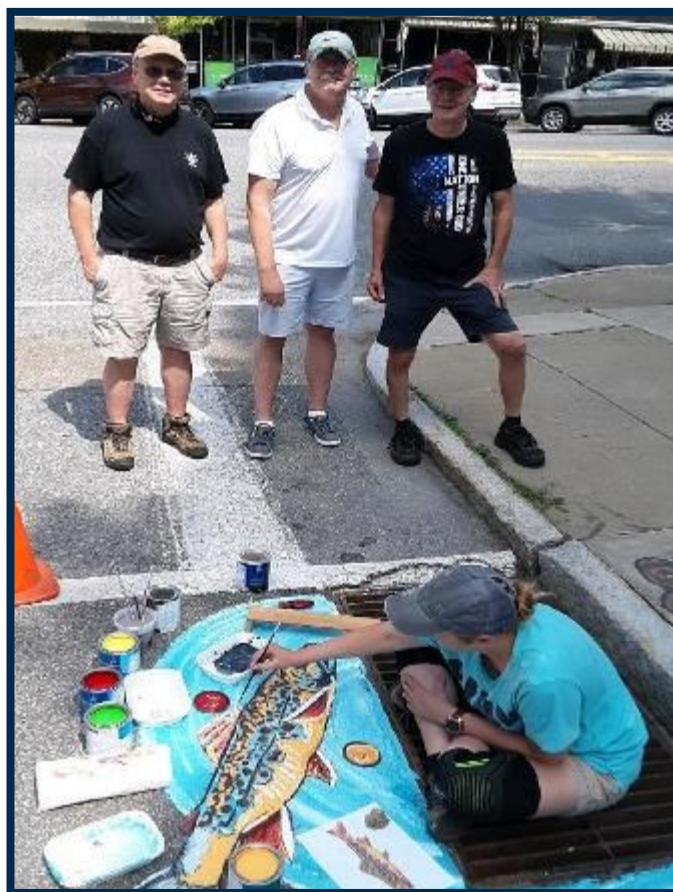


The Elk County Conservation District (ECCD) was awarded a grant through the Elk County Council on the Arts (ECCOTA) and PA Partners in the Arts (PPA) for our Elk County Upstream Art project in 2019. The grant included the completion of 4 storm drain murals across Elk County. Two of the murals are located in downtown Ridgway, one by the St. Marys Parking Garage, and the last one is located in front of the Johnsonburg Community Center. These murals were painted on storm drain inlets by Elk County artists, Liz Dippold of *Country Chic Studio* and Mickayla Poland of *PA Made*. The goal is to help raise awareness about storm water and where it goes. Most storm water is drained directly to nearby streams and rivers, this opens our waterways up to sediment pollution, thermal pollution, and pollution from any trash that is washed down.

Scan me to learn
more about storm
water!



Above—Watershed Technician, Evan Delong, prepares the Johnsonburg storm drain for painting



Above- Artist, Liz Dippold, works on her Ridgway mural as onlookers inquire about the project and are educated by Conservation District staff about storm water effects.

Elk County Upstream Art Continued...

Artist Mickayla Poland
with her mural in front of
Joey's Bakery in Ridgway.

**Two more murals
coming in 2021!**



Artist Liz Dippold's Mural in
front of the community
Center in Johnsonburg.

The upstream art project reached an outstanding number of people. Over 30,000 people were reached virtually. The number continues to grow with the addition of general foot traffic which passes through the area. These murals were a fun and well-received way to spread the word about storm water. We plan to install 2 more murals in 2021!



Artist Mickayla Poland beside her
completed mural on Depot Street
in Saint Marys .

To make these wonderful creations last as long as possible, concrete specific paints and a concrete sealer were used. Thank you to Sherwin Williams for providing a generous discount on paint and supplies, as well as the unparalleled product advice. Here's to many more years of looking at these masterpieces!

THE 12 CRAFTS OF CHRISTMAS

The Boxes were stacked in the Recycling Center with care...



This year the Elk County Conservation District and the Elk County Community Recycling Center partnered to create the 12 Crafts of Christmas. This project utilized recycled materials from the Recycling Center to complete 12 different crafts.

30 kits, containing enough materials for 3 of most crafts, were compiled. Each craft also included an educational facts associated with it. Community members were able to pick up a craft kit at the Recycling Center on Wednesday, December 2nd. Pick-up was drive through and contactless making it easy and safe for everyone. The project was a hit, and all 30 kits were picked up by local families.

You can see some of the completed crafts by visiting our Facebook page [Elk County \(PA\) Conservation District](#). We hope the kits were enjoyed and brought a bit of Christmas cheer into the homes of Elk County residents!

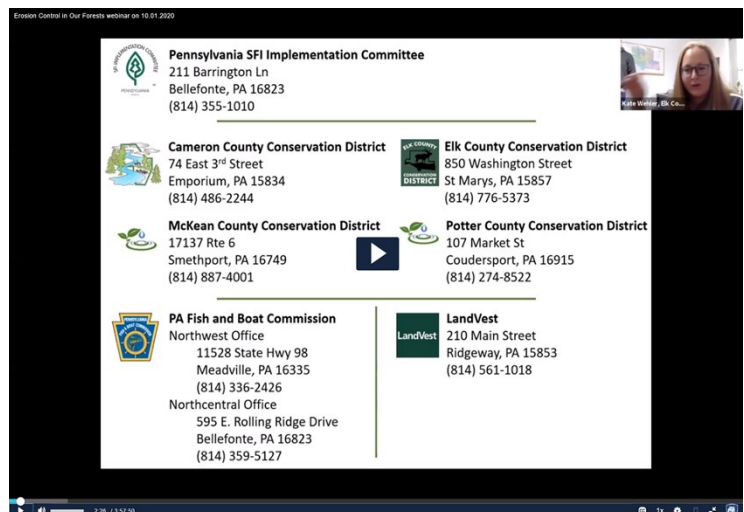


Erosion Control in Our Forests: A Cooperative Workshop Webinar

A partnership of northcentral PA Conservation Districts held an annual cooperative workshop for forest industry professionals. This popular full day workshop includes best management practices for timber operations; regulatory information and updates; permitting needs; other current environmental considerations; and a field portion to look at real-life BMP scenarios and challenges. For 2020, it was decided to move the workshop to the virtual platform, with the support and assistance of Penn State Extension and the PA Sustainable Forestry Initiative (SFI).

The Elk County Conservation District was scheduled to host the workshop in 2020, and served as the general coordinator for the virtual event. Penn State Extension offered to host the webinar using their zoom platform. The four-hour webinar workshop had 119 participants, well exceeding normal attendance for the in-person event. The webinar was offered to anyone in PA, and beyond, at no cost. Participants were eligible for SFI professional credits for a small fee.

Presenters from Elk County included District Manager, Kate Wehler who discussed Regulatory Review and Resource Conservation Technicians, Ryan Grimm who provided an overview of Stream Crossing Considerations and Taylor Gillette who demonstrated how to access and utilize Stream Stats. Additional Presenters included Cameron, McKean and Potter Counties, joined by Chuck Coup from PA SFI, Tom McMann of the PA Fish & Boat Commission. Landvest, Inc. also showed a representative timber harvest on a property they manage in Elk County. The webinar was a success and provided a great alternative format to reach a larger audience.



TROUT UNLIMITED TECHNICAL TRAINING

Over the summer, Trout Unlimited representative, Shaun McAdams and Penn State Center for Dirt Gravel and Low Volume Road Studies (DGLVR) representative, Maria Dreese held a series of workshops for interested parties about the proper installation of stream crossings. The workshops covered how to assess a stream, determine ideal structure size, how to increase aquatic life passage and was geared toward municipality staff and DGLVR coordinators.

Historically, stream crossings were often undersized, causing stream bank erosion, stream health decline, and structural degradation. Over the years, much has been learned about proper stream health and through programs like these, it is our hope that we can improve stream health and reduce negative impacts across the state.



Above: Attendees discuss proper culvert installation to maximize stream health



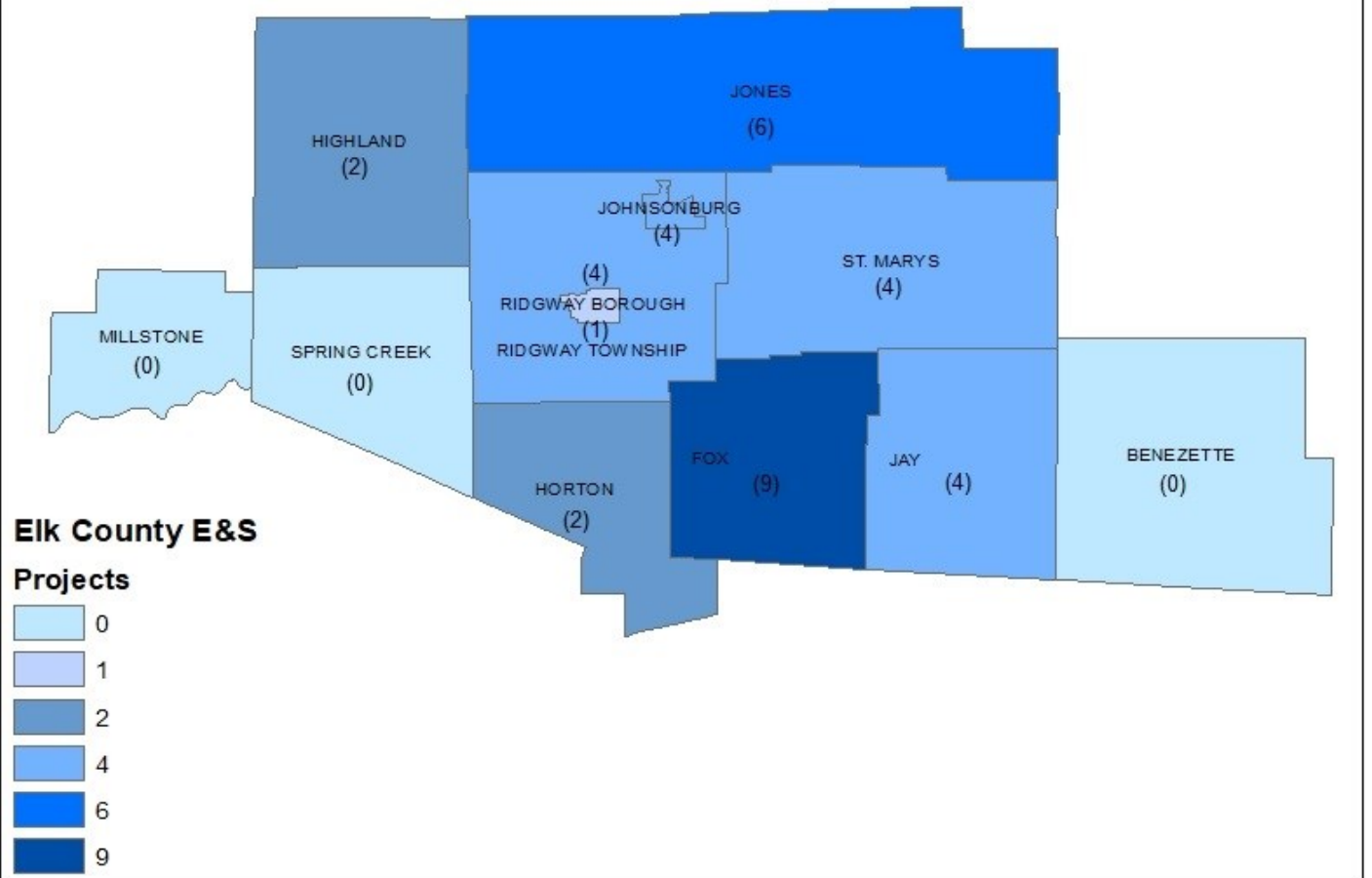
Above: Several attendees are informed by Maria Dreese, PSU center for DGLVR Roads, about proper installation of cover material in culvert pipes during a site visit.

One portion of the workshop focused on longitudinal surveys. Surveys of this nature help plot the slope of a stream and determine its natural rhythm. With the use of longitudinal surveys we can help ensure that culvert design and selection are ideal for the stream location. This will help prevent structure failure in the future and also reduce required maintenance around crossings.

This 2 part workshop was well received and helped educate 15 individuals on the importance and benefits of correctly sized stream crossings!

Chapter 102 Program

2020 Elk County Erosion and Sedimentation Projects By Municipality



In 2020 the Elk County Conservation District received 36 total Erosion and Sedimentation project applications. Within the 36 projects there were a total of 7 NPDES general permits and 29 E&S plans. 9 out of the 13 municipalities in Elk County had projects in 2020.

Taking a look at previous years we see that 2020 doesn't hold the title for the largest number of projects, but its numbers aren't necessarily lower than normal. In the past three years the total project applications were: 2017-47, 2018-32, and 2019-47. While there is no doubt the COVID-19 pandemic impacted the timing of projects, many project were still able to be completed.

Right: If you drove though St.Marys in the summer of 2020, you likely noticed this NPDES permitted site, the new Burger King.

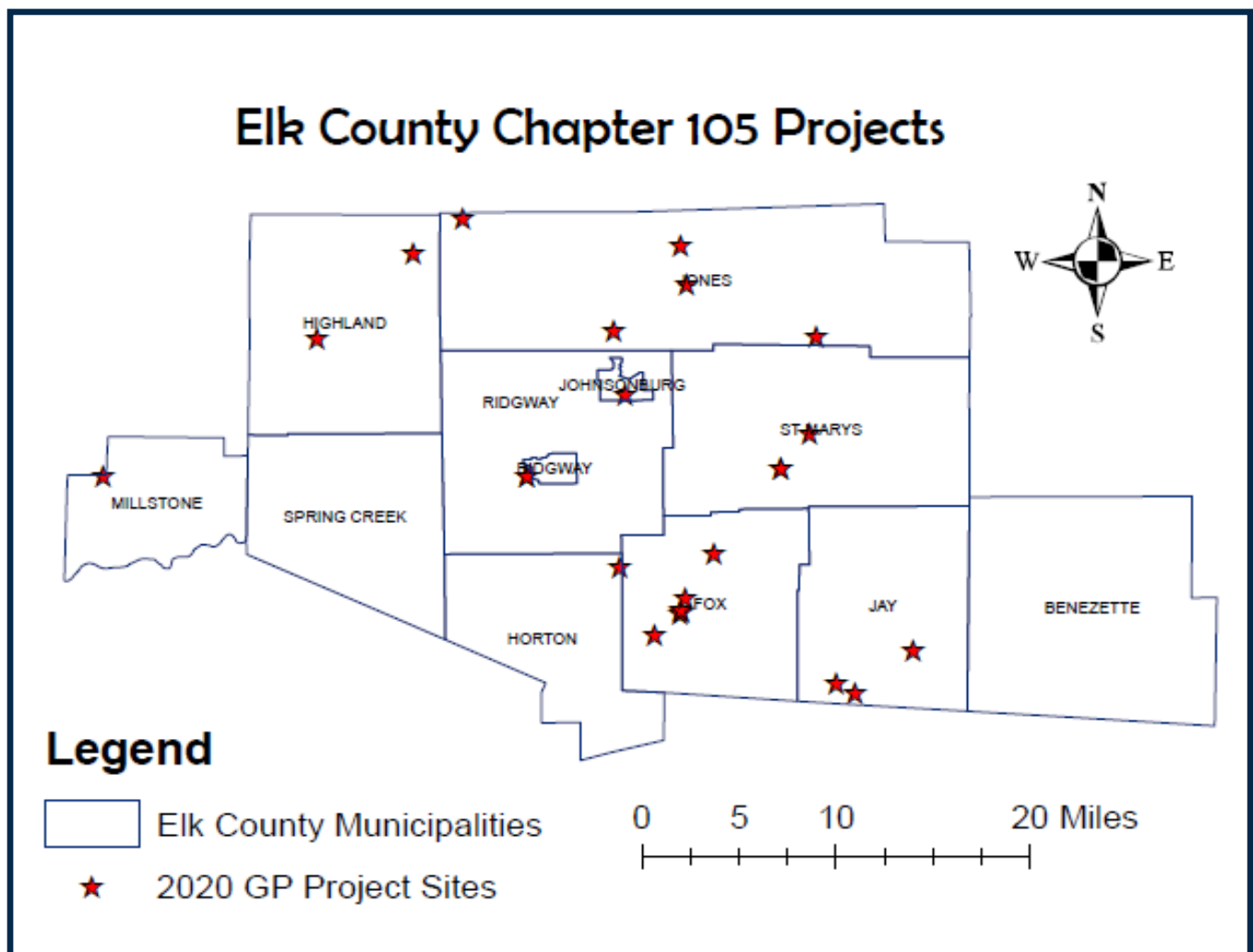


Chapter 105: Water Obstruction and Encroachment Program

In 2020 the Elk County Conservation District approved 24 General Permits. This is an increase from the 20 permits issued in 2019. The permits included a variety of stream work ranging from permanent and temporary stream crossings, to stream-bank stabilization and utility line crossings.

These permits were issued under the Chapter 105 program which deals specifically with work in and around streams and bodies of water. Elk County is one of 31 counties who are Chapter 105 delegated in Pennsylvania. Victoria Challingsworth, Resource Conservation Technician, has taken over the 105 program for the county.

The map below shows the approximate location of these projects.



2020 Road Assessment Changes Project Potential for Elk County

The winter of 2019-20, the Elk County Conservation Districts Dirt, Gravel, and Low Volume Road program assessed the dirt and gravel roads in Elk County. This assessment was to delineate potential project sites within Elk County that showed signs of sediment pollution. Historically the County has never had a survey this thorough or extensive. The data we had previously was primarily from volunteers with Trout Unlimited, and only related to areas of specific interest. Before conducting the assessment, Elk County had recorded 40.7 miles of potential project sites and 193 miles of unpaved roads. After the assessment those numbers rose to 103.8 miles of potential project sites and 199 miles of unpaved and low volume roads. The increase in project areas has resulted in an increase in funding (**approx. ~\$70,000!**) for the DGLVR Program and those funds will be used to improve dirt gravel and low volume roads across the county and minimize sediment pollution.

ECCD Buffalo Turbine Use Skyrockets

In the year 2020 the Elk County Dirt Gravel and Low Volume Road program's Buffalo Turbine was rented out on 10 separate occasions. The Buffalo turbine is a large motorized fan, imagine a giant leaf blower, which is used to clear ditches of debris and prevent clogging and erosion. Highland, Benezette, Jones Townships rented it, as well as the City of St. Marys, Spring Creek, and Jay townships. This is roughly 46% of our municipalities making use of the machine. That doesn't include use from other eligible entities such as, the PA Game Commission and St. Marys Sportsmen's Club, who have also used it this year.

So far, the entities who have used the Buffalo Turbine have had nothing but positive feedback. To maintain interest in the Buffalo Turbine, we created an informative video explaining the benefits of using the turbine and how to rent it. You can check out the video on our Facebook Elk County (PA) Conservation District.

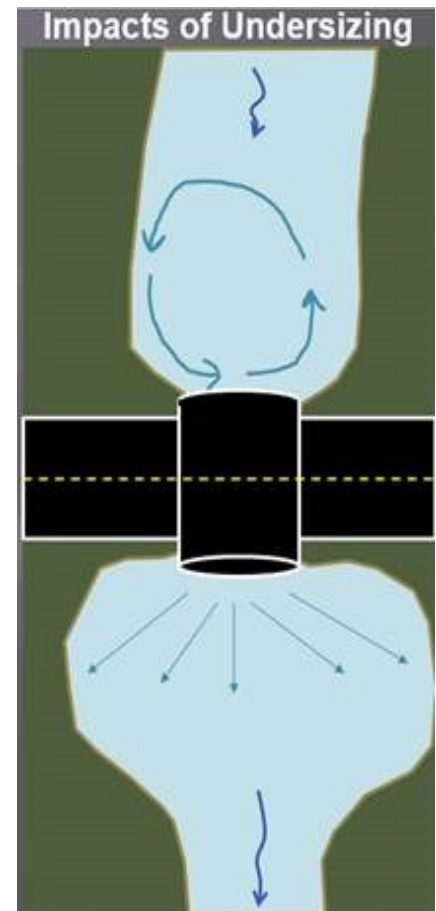


Hunter Creek Installation: Improving Dirt and Gravel Roads In Elk County

Page 15

If you were riding around in the Allegheny National Forest in August you may have noticed that a portion of Owl's Nest Road was closed. The closure was due to the installation of a new culvert on Hunter Creek. This structure previously included 2 small, round, pipes which caused a major barrier for aquatic life, water, and debris. The culvert that replaced the former structure is 7.5 ft. high, 11 ft. wide, and 42 ft. long. A larger size allows for high waters to move through the pipe without being constricted. It also lets sediment and debris move through the system in a more natural manner.

Typically, when a stream is constricted, it begins to form an hourglass shape around the structure. The upstream side of the structure gets widened because the water slows down and has a swirling whirlpool effect. The downstream side gets over widened because the structure acts like a firehose and shoots the water out. There are a variety of negative impacts this has on a stream system. By installing a larger pipe, we can help improve stream health. This project was partially funded through the Dirt Gravel and Low Volume Roads Program and coordinated through the efforts of Highland Township, Western Pennsylvania Conservancy, and the Allegheny National Forest.



Above: Workers from the Elk County Conservation District, Western Pennsylvania Conservancy, US Forest Service, Highland Township and other volunteers, work together to place material in the new culvert to create ideal aquatic passageways.

Lending a Hand to Local Farmers

The Elk County Conservation assisted the Meredith Family with identifying a pollution problem with their manure storage and heavy use area. After this initial assessment, we aided them in applying for a *Growing Greener Grant* through the Headwaters RC&D Council to create an updated manure stacking pad and a sufficient heavy use area.

A manure stacking facility is constructed of durable materials and designed to temporarily store solid livestock manure or other agricultural waste until it can be removed and properly disposed of on the land. Also installed was a Heavy Use Area. This is designed to stabilize a ground surface that is frequently and intensively used by people, animals, or vehicles.

The estimated installation cost for waste storage facility, critical area planting, roofs and cover, roof runoff structure, access road, animal trails and walkways, fence, and an underground outlet was \$23,935.75. The Headwaters RC&D Council approved the funding of this project for the estimated cost. Vollmer Brothers Excavating was hired to do the excavating and concrete work, while local contractor, Karl Keech was hired to do the construction of the roof and spouting. The project was completed in the Fall of 2020. The Meredith's could not be happier with their new storage facility and heavy use area and neither could we!

The Elk County Conservation District works to aid our local farmers in whatever way possible, whether it is by looking for funding, grant applications, or agriculture education. We frequently partner with other organization such as NRCS and other Conservation Districts to make this possible.



Left:
Manure
Stacking
Pad

Right:
Attached
Heavy Use
Area



Congrats to one of Elk County's own: Amanda McMinn-Balon

The Elk County Conservation District wants to take a moment to congratulate Amanda McMinn-Balon on being awarded the Outstanding Woman in Agriculture Award by the Pennsylvania Farm Bureau (PFB). The award recognizes a woman who, through her leadership, is contributing to the larger agriculture community. Amanda owns Big Maple Farms Natural Therapies and comes from a family with a long history of farming and agriculture.

Balon said, she is humbled to have received the award and dedicated it to her family, especially her grandfather, who set an example of community service and engagement. Balon's grandfather, Ronnie, passed away earlier this year. Ronnie served on the Elk County Conservation District's board of Directors for over 40 years. Amanda's father, Ray, now serves on the Districts' Board of Directors as Farmer Director.



Amanda serves on several committees through the PFB including their Board of Directors, and the Statewide Agriculture Promotion Committee. She is also The Elk County Coordinator for Pennsylvania Farm Bureau's Ag Literacy week, which helps bring agriculture and learning into over 50 Elk County Classrooms through the reading of agriculture themed books.



Congratulations Amanda! Keep up the amazing work and keep making a difference!

Inaugural Conservation Cup

September 12th dawned crisp and sunny, the perfect day for golf, as the Elk County Conservation District hosted our first ever Conservation Cup golf tournament at the Bavarian Hills Golf Course. This tournament was designed with conservation in mind. All the proceeds from the event will be put toward environmental education and the Elk County Conservation District Scholarship, which will be offered for the first time in 2021.

8 teams participated in the first-ever Conservation Cup. The teams played 18 holes of golf, enjoyed a light lunch and a delicious steak dinner. Prizes were awarded for 1st and 2nd place, as well as various skill prizes. The Conservation Cup would like to thank our wonderful sponsors who made this event possible. Thank you Dellullo Trucking, Domtar, General Motors, St. Marys Legion, Pepsi, RJ Vollmer, S&T Excavating, Seneca Resources, St. Marys Insurance, Wildwoods, and St. Marys Beverage.

Thank you to all the participants, volunteers, sponsors and of course, Bavarian Hills Golf Course for making this event possible and congrats to the winning team composed of Seth Peterson, Cole Peterson, Justin Quiggle, and Ryan Marshall!

With the success we had this year, we hope to continue the event in future years.



Envirothon

Envirothon is always a favorite event for the Elk County Conservation District. We enjoy getting to know the students and competing teams throughout the year. With the various study days and outreach projects we provide before the official competition day, we tend to see the students with regularity. Sadly, 2020 Envirothon looked much different than years previous.

Due to Covid-19 concerns the Envirothon competition was cancelled and done as an individual knowledge test virtually. With more time for preparation and planning, 2021 Envirothon is already shaping up to be much more promising! While the competition and study days will be virtual, much effort has been put into making materials as engaging and interactive for competing students. Conservation Districts and cooperating agencies are working on educational videos and compiling hands-on resources and kits for independent classroom use.

WORKING ON WATER QUALITY WITH WESTERN PENNSYLVANIA CONSERVANCY

Page 19

The 100 year anniversary isn't the only thing that happened in State Game Lands 25 this year. The ECCD assisted Western Pennsylvania Conservancy in completing a large woody debris (LWD) project on Middle Fork Run.

This project is part of a grant through the Coldwater Heritage Partnership that The Western Pennsylvania Conservancy (WPC) received to improve aquatic ecosystems in the Middle Fork Watershed located in Game Lands 25. Projects of this style are designed to improve aquatic habitat for fish, amphibians and macro-invertebrates. These projects also help reduce sedimentation and erosion, recycle nutrients throughout the ecosystem and reconnect a stream to its floodplain.



Shown above ECCD Watershed Technician, Evan DeLong, works a log into place.



Above: An in-progress photo of a LWD project site

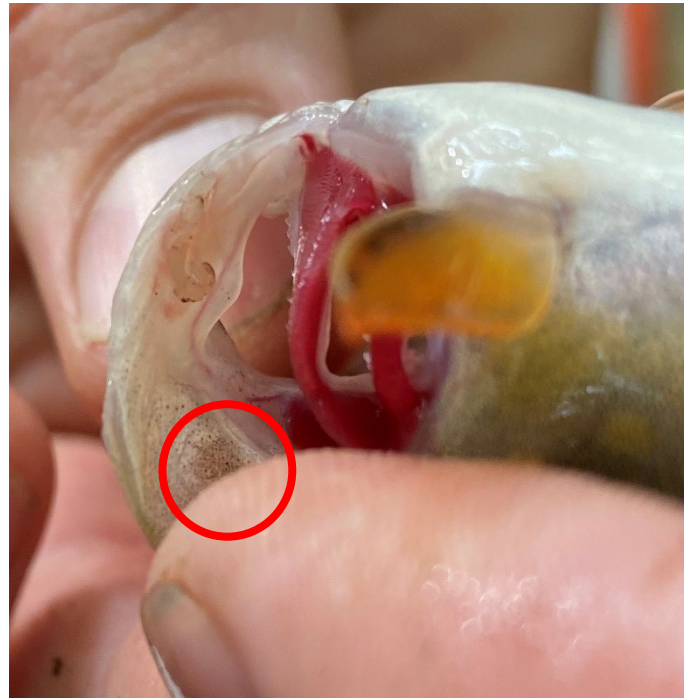
“Habitat structures” are constructed by felling trees and moving them into place using a manual winch called a grip hoist. Once the large wood is placed into the stream, smaller shrubs and brush are woven in-between to reduce the velocity of the water and also act to provide habitat for smaller fish. For more information on this project, check out the educational video link! <https://www.youtube.com/watch?v=RBGRJyETH7U&feature=youtu.be>

Assessing Gill Lice in Elk County Waterbodies

This year, Conservation District staff were able to assist the PA Fish and Boat Commission with a gill lice survey. Gill lice are small parasites that attach to the gill. The species is very host specific, meaning it will only attach to certain fish species, in this case brook trout. While not directly linked to fish mortality, gill lice have been shown to increase stress on the fish and slow their breathing. This in turn limits their oxygen intake.

Gill lice were first reported in PA in the 1980s and the numbers being noted and reported has only increased since then.

While out with the PA Fish and Boat Commission, our staff were able to see several examples of gill lice found on the fish they had electroshocked. Electroshocking stuns the fish long enough for them to be netted, identified, and measured, then released back into the stream without being harmed. Gill Lice are still being monitored, studied, and surveyed. The hope is to learn more about their spread and identify what waterbodies have already become infested so we can prevent further infestations.



Above: Surveyors find gill lice (indicated by circle) on the gills of a young native brook trout.

Below: Fish are placed on the board to be measured, recorded, checked for gill lice and then are released.



Redd Surveys and Trout Spawning

The Elk County Conservation District assisted the Allegheny National Forest Staff in conducting redd surveys on Cherry Run in the South Branch Tionesta watershed. Cherry Run is serving as a control in a paired watershed study with Little Arnot Run, to research the effects that large woody debris (LWD) and canopy cover have on trout breeding behavior and redds. Chop and drop will leave LWD in Little Arnot Run and change its canopy cover, but not in the control Cherry Run. This will provide interesting data which will be used to improve habitat management plans in the future.

Trout spawning beds, called redds, are made by female trout to lay their eggs during the breeding season. Redds are commonly found near tail water ends of pools, which have shallow riffles



to provide oxygen needed for the eggs to hatch. The streambed must also have the right sized gravel for a female trout to clean and shape, usually between 5-50 millimeters in size. She uses her tail and belly to form an oval nest, typically one to three feet wide where the eggs are then placed and the eggs are fertilized by males during courtship rituals. Redd surveys also help get an idea how much spawning is taking place and can identify stressors on a stream such as sedimentation.

West Creek Acid Mine Drainage Project Update

A grant for \$738,030 was submitted to the Department of Community and Economic Development's (DCED) Abandoned Mine Drainage and Abatement Program in August to construct a passive acid mine drainage treatment system along West Creek in St Marys. The environmental assessment for the restoration waiver has been approved by the Department of Environmental Protection (DEP) and the National Pollutant Discharge Elimination System (NPDES) permit has also been approved. The ECCD currently is waiting for grant awards that are anticipated to be announced sometime in the spring of 2021.



Above: An Acid Mine Drainage Seep coming from the hillside that eventually reaches the West Creek main stem.

11:53 AM
01/26/21
Cash Basis

Elk County Conservation District Income & Expense Report (Yr.End) January through December 2020

	Jan - Dec 20
Income	
40000 - CDFAP--Admin. Assist. Grant	13,500.00
40100 - CDFAP--Income (Dist.Mgr./1st To	52,252.90
40110 - ACT (Ag Tech)--Income - CDFAP	20,117.36
40120 - Nut. Mgmt. Income (Ag Tech.)	7,904.12
40150 - Act 13 - UGWF Income	59,827.65
40200 - Watershed Spec. Grant Income	30,179.02
40300 - S/W Enforcement Officer Income	54,098.27
40400 - County Allocation Income	24,500.00
40500 - E & S Review Fee Income	5,800.00
40525 - GP Permit Fees (Ch.105)	3,200.00
40550 - NPDES Permit Fees	5,500.00
40552 - Enforcement Fees	3,173.50
40600 - Interest Income - CNB Savings	904.09
40601 - Interest Income - Reserve Acct.	19.24
40610 - Interest Income -- DGR Acct	419.92
40611 - Interest Income -- LVR Acct.	72.61
40620 - Interest -- Cleanwater Acct.	231.36
40710 - Misc. Income -- Mini-Grants	
40711 - Coldwater Heritage Mini-Grant	500.00
40710 - Misc. Income -- Mini-Grants - Other	3,000.00
Total 40710 - Misc. Income -- Mini-Grants	3,500.00
40750 - Misc. Income -- Envirothon	785.11
40753 - Cons. Cup - Fund./Schol. Income	3,779.00
42103 - GG Grant -- West Creek AMD	55,055.67
48600 - Dirt & Gravel/LVR - Proj.Inc.	
48601 - Dirt & Gravel - Project Income	132,235.44
48605 - Low Volume Road - Project Income	16,150.62
Total 48600 - Dirt & Gravel/LVR - Proj.Inc.	148,386.06
48610 - Dirt & Gravel/LVR - Adm. Income	
48611 - Dirt & Gravel - Admin. Inc.	20,216.71
48612 - Dirt & Gravel - Trng/Educ Inc.	18,881.49
48615 - Low Volume Road - Admin. Inc.	5,503.46
48616 - Low Volume Road - Trng.Educ.Inc	4,000.00
Total 48610 - Dirt & Gravel/LVR - Adm. Income	48,601.66
Total Income	541,807.54
Expense	
50000 - Payroll Expenses	198,999.59
50200 - Health Insurance	23,259.22
50210 - Vision Insurance	504.59
50220 - Dental Insurance	1,368.16
50230 - Life Insurance	407.97
50240 - Short Term Disability	1,071.66
50300 - Retirement (7%)	13,076.13
50400 - FICA (Social Security) Company	13,358.07
50500 - Med. (Social Security) Company	3,124.36
50600 - PAUC - Unempl.Comp. Company	1,020.35
50700 - Workers Compensation	1,373.29
52000 - Travel Expense	1,422.26
52200 - Per Diem Expense	491.36
52500 - Registration Fees	385.00
52600 - Meeting Expense	10.00
54200 - Office Supplies	1,968.58
55600 - Advertising	34.30
56000 - Rent	2,721.23
56500 - Furniture & Equipment	895.15
57000 - Telephone	950.00
57200 - Postage Expense	21.65
57500 - Dues, Fees & Memberships	2,672.70
57550 - Sponsorship Fees	100.00
57560 - Employee Recognition & Awards	2,135.56

11:53 AM
01/26/21
Cash Basis

Elk County Conservation District
Income & Expense Report (Yr.End)
January through December 2020

	Jan - Dec 20
57580 - Special Projects	351.28
57590 - Education & Outreach Expenses	718.73
57910 - Act 13 - CDFAP/SAA Expenses	
57911 - Act 13--CDFAP/SAA (Dir. Travel)	351.90
57912 - Act 13--CDFAP/SAA (Ann.Rpt.)	36.00
57913 - Act 13--CDFAP/SAA (Liab.Insur.)	1,174.25
57914 - Act 13--CDFAP/SAA (Postage)	57.66
57915 - Act 13--CDFAP/SAA (Admin.Svcs.)	2,848.78
57916 - Act 13--CDFAP/SAA (Audit)	3,075.00
Total 57910 - Act 13 - CDFAP/SAA Expenses	7,543.59
58000 - Envirothon Expenses	932.30
58002 - Annual Race/Fundraiser Expenses	20.00
58003 - Cons. Cup - Fund/Schol. Expense	2,645.02
58120 - Misc. Mini-Grant Expenses	
58121 - Coldwater Heritage Mini-Grant	
58125 - C/W Heri.Grant -- Adm.Svcs.	757.02
Total 58121 - Coldwater Heritage Mini-Grant	757.02
58120 - Misc. Mini-Grant Expenses - Other	6,847.93
Total 58120 - Misc. Mini-Grant Expenses	7,604.95
58135 - Headwaters - Pollinator Garden	
58137 - HWR CDC-Poll.Garden - Equip/Sup.	523.47
Total 58135 - Headwaters - Pollinator Garden	523.47
58205 - StackpoleHall Grant--W.Cr. AMD	16,004.73
58206 - GG Grant -- West Creek AMD Exp.	46,284.47
58600 - Dirt & Gravel/LVR - Project Exp	
58601 - Dirt & Gravel Road - Projects	58,476.15
Total 58600 - Dirt & Gravel/LVR - Project Exp	58,476.15
58610 - Dirt & Gravel/LVR - Admin. Fees	
58611 - Dirt & Gravel Road - Admin.	12,817.50
58612 - Dirt & Gravel Road - Trng./Educ	3,601.92
58615 - Low Volume Road - Admin	3,890.47
58616 - Low Volume Road - Trng./Educ.	675.56
Total 58610 - Dirt & Gravel/LVR - Admin. Fees	20,985.45
Total Expense	433,461.32
Net Income	108,346.22

Cooperating Agencies & Organizations

The Elk County Conservation District works closely with many local, state and federal government agencies as well as many non-profit organizations. We greatly value these partnerships and collaborative conservation efforts they provide. The following is a partial list of some of our partnering agencies and organizations:

Allegheny National Forest

Marienville Ranger District
131 Smokey Lane
Marienville, PA 16239

Army Corps of Engineers

East Branch Lake
631 East Branch Dam Road
Wilcox, PA 15870

DCNR Bureau of Forestry

Elk Forest District
258 Sizerville Road
Emporium, PA 15834

DCNR Bendigo State Park

533 State Park Road
Johnsonburg, PA 15845

Keystone Elk Country Alliance

950 Winslow Hill Rd
Benezette, PA 15821

PA Dept. of Environmental Protection

North West Regional Office
230 Chestnut Street
Meadville, PA 16335

PA Dept. of Environmental Protection

Knox District Office
310 Best Avenue
Knox, PA 16232

PA Fish & Boat Commission

North Central Region Law Enforcement
595 East Rolling Ridge Drive
Bellefonte, PA 16823

PA Fish & Boat Commission

North Central Region Outreach & Education
450 Robinson Lane
Pleasant Gap, PA 16823

PA Game Commission

North Central Region
P.O. Box 5038
Jersey Shore, PA 17740

USDA Natural Resources Conservation Service

478 Jeffers Street, Building 3, Suite D
DuBois, PA 15801

PA Association of Conservation Districts

25 North Front Street
Harrisburg, PA 17101

Headwaters Resource Conservation & Development

109 North Brady Street, 2nd Floor
DuBois, PA 15801

Western Pennsylvania Conservancy

Allegheny Regional Office
159 Main Street
Ridgway, PA 15853

PA Department of Agriculture

Western PA Region
6 McIntyre Road
Gibsonia, PA 15044

PA Department of Transportation

Elk County Maintenance Department
32 St. Leo Avenue
Ridgway, PA 15853

US Fish & Wildlife Service

PA Field Office
315 South Allen Street, Suite 322
State College, PA 16801

North Central PA Regional Planning & Development

49 Ridgmont Drive
Ridgway, PA 15853

Western PA Coalition for Abandoned Mine Reclamation

266 Donohoe Road, Suite 110
Greensburg, PA 15601